

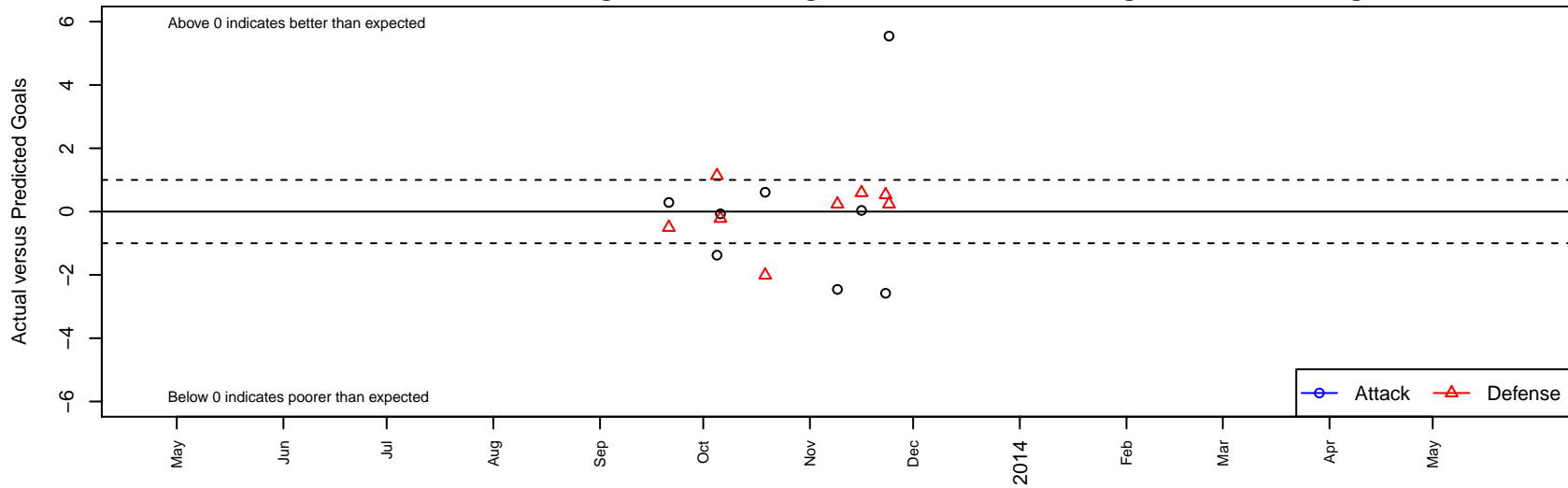
# GSC Gryphons Red G01

, CAN  
 G01 total strength=1135  
 attack=3.94 defense=2.59  
 alt names used:  
 GSC Gryphons Red G01  
 GSC Gryphons 01G Red

Venues played:  
 NorCal Premier F11 – Region 2 U12



**GSC Gryphons Red G01**  
 Dots are actual minus expected GF (blue circles) and GA (red triangles).  
 Blue line is smoothed change in attack strength. Red is smoothed change in defense strength.



	<b>date</b>	<b>home</b>		<b>away</b>		<b>venue</b>	<b>pred.home</b>	<b>pred.away</b>
6709	2013-11-24	SF Vikings Ravens Red G01	0	GSC Gryphons Red G01	8	NorCal Premier FI1 – Region 2 U12	0.24	2.46
6666	2013-11-23	GSC Gryphons Red G01	1	Burlingame SC Falcons G01	1	NorCal Premier FI1 – Region 2 U12	3.58	1.53
6573	2013-11-16	GSC Gryphons Red G01	3	Peninsula Odyssey Blue G01	0	NorCal Premier FI1 – Region 2 U12	2.96	0.60
6468	2013-11-09	GSC Gryphons Red G01	0	SF Vikings Ravens Red G01	0	NorCal Premier FI1 – Region 2 U12	2.46	0.24
6012	2013-10-19	De Anza Force Red G01	3	GSC Gryphons Red G01	3	NorCal Premier FI1 – Region 2 U12	0.99	2.39
5774	2013-10-06	GSC Gryphons Red G01	1	San Bruno Lowen 83 Tornados G01	1	NorCal Premier FI1 – Region 2 U12	1.07	0.78
5663	2013-10-05	MVLA Avalanche Black G01	1	GSC Gryphons Red G01	0	NorCal Premier FI1 – Region 2 U12	2.13	1.38
5358	2013-09-21	West Valley United Red G01	1	GSC Gryphons Red G01	3	NorCal Premier FI1 – Region 2 U12	0.50	2.71